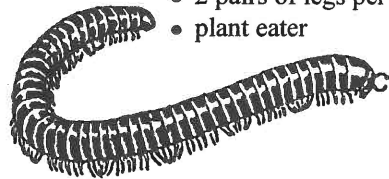


Fallen Log Field Guide

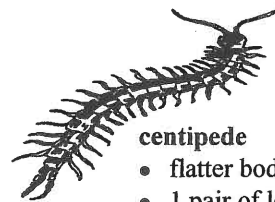
These plants and animals commonly are found in a rotten log. They are not to scale.



- carpenter ant**
- largest common ant
 - eats other insects
 - nests in rotten wood



- millipede**
- wormlike
 - 2 pairs of legs per segment
 - plant eater



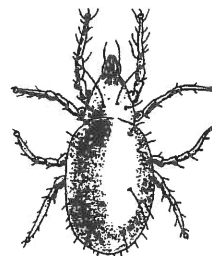
- centipede**
- flatter body
 - 1 pair of legs per segment
 - meat eater



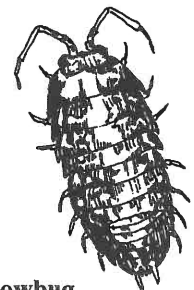
- mushroom**
- various kinds
 - feeds off host



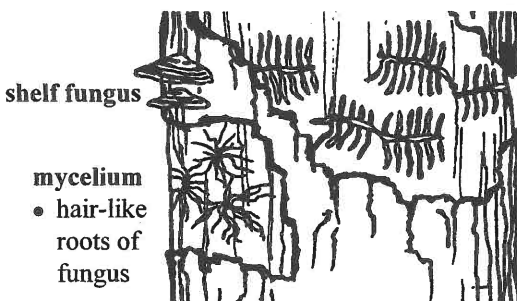
- spider**
- 8 legs
 - sizes vary
 - predator



- mite**
- 8 legs
 - minute
 - eats insect eggs

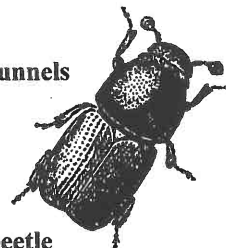


- sowbug**
- flattened body
 - 7 pairs of legs
 - scavenger
 - $\frac{3}{8}$ - $\frac{1}{2}$ inch

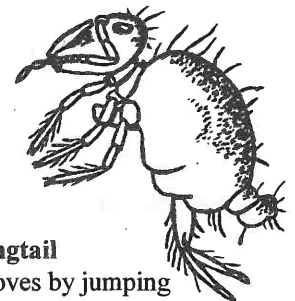


- mycelium**
- hair-like roots of fungus

bark beetle tunnels



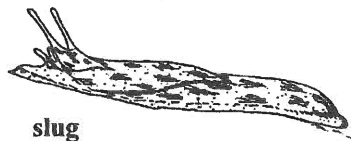
- bark beetle**
- mines under bark
 - eats inner bark
 - to $\frac{1}{4}$ inch



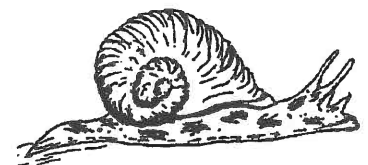
- springtail**
- moves by jumping
 - lives on decaying plant matter
 - to $\frac{3}{16}$ inch



- earthworm**
- segmented
 - eats decaying plants and animals



- slug**
- eats plant material
 - detects food by smell
 - leaves mucous trail



- snail**
- eats plant material
 - leaves mucous trail



- worker termite**
- eats wood
 - found in Southern Iowa
 - to $\frac{3}{16}$ inch



- wood roach**
- eats decaying plants & animals
 - $> \frac{5}{8}$ inch



- beetle**
- many kinds of beetles live in a rotten log
 - 3 pairs of legs
 - 2 antennae
 - 1 or 2 pair wings



- beetle larva**
- many kinds of larvae live in a rotten log