

TWENTY SEVENTEEN ANNUAL REPORT

What's Inside

- 2..... Executive Director's Report
- 4..... Equity in Programming
- 6..... Connection to the Natural World
- 8..... Year in Review
- 10..... Old Henry
- 11..... Donor & Member Recognition
- 15..... Corporate Sponsors
- 16..... Volunteer Highlights

THE BOARD

EXECUTIVE COMMITTEE

President,
Brooke Fitzgerald
Treasurer, Travis Fell
Secretary, Ryan Murphy
Immediate Past President, Tom Hughes
Member, Terry Strait

DIRECTORS

Steve Allsop
Scott Arensdorf
Steve Dummermuth, Jr.
David Hayes
Jeff Hines
Anne King
Helga Mayhew
Andrew Morf
Brad Morgan
Hunter Skogman
Jen Welton
David Wenzel

TRUSTEES

Paul Brundell
Pat Deignan
Cathy Gullickson
Lisa Henderson
Doug Kopp
Lisa Ramlo



2017 Annual Report Print Sponsor:



A word from our Executive Director, John Myers



When the Amazing Space project was conceived we thought that annual Nature Center attendance would increase around 25%. This projected increase was an exciting prospect for us as we had been hovering around 40,000 annual visitors for many years.

In 2017, the first full year Amazing Space was open to the public, was an unknown but exciting time as our team of volunteers and staff prepared

for this growth. Little did we know that we would soon be looking at 25% growth in the rearview mirror and be faced with exponential increases. As each month flew by, we began to see some startling and exciting trends of thousands of kids, families, and adults visiting the Nature Center. In fact, throughout 2017 a total of 81,188 people visited ICNC representing a 108% increase! To say this is astounding, and that it greatly exceeded our expectations, are understatements!

So what did all those people do at ICNC? That's where it really gets exciting as all areas of our programs saw growth in attendance numbers.

| | |
|--|--------|
| School Field Trips (Pre-K to 12th grade) | 6,817 |
| Scouting Programs | .471 |
| Casual Walk-In Visitors | 11,328 |
| Public Programs | 3,706 |
| Camps (Summer, Winter, Service Days) | .328 |
| Trail Hikers, Bikers, Outdoor Users | 40,250 |
| Special Events/Programs | 6,210 |
| Rental Events/Birthday Parties | 11,903 |
| Retirement Community Programs | .175 |



Countries Represented

| | |
|-----------|---------------|
| Argentina | Saudi Arabia |
| Australia | South Africa |
| Brazil | Switzerland |
| Canada | Thailand |
| Japan | United States |

As we look to another successful year in 2018 it is only with the support of over 750 volunteers that we are able to educate and inspire all of these people.

Of particular excitement is that our visitors came from all 50 states and 10 different countries.

Etzel Sugar Grove Farm

In 2016, ICNC received a very generous donation of 190-acres of land from George Etzel. Located near Alburnett, Sugar Grove Farm had been in Mr. Etzel's family since 1888 and his desire was to leave the property to an organization which would protect and care for the land in perpetuity. The land consists of 80 acres of agriculture ground, 80 acres of timber, 20 acres of pasture and 10 acres with the homestead and barns.

Concurrent to this donation, ICNC's board and staff had begun a conversation regarding our role in agricultural sustainability and local food production. For many years ICNC has promoted and demonstrated sound principles such as maple syrup harvesting, honey production, and backyard chicken management. We feel that now is the time for us to increase our focus in these areas and Etzel Sugar Grove Farm gives us just the place to do so.

In early 2018 we announced our plans to implement a three-year start-up phase. We will use the farm to establish sustainable, economically viable permaculture farming practices and create Champions of Nature through education and replication of these practices. We will begin the process of organic certification, which will take at least three years, and focus on permaculture and restorative agriculture.

Permaculture is an agriculture system that merges human activity with the natural surroundings to create efficient,

executive director's MESSAGE

self-sustaining ecosystems. This integration is the core of restorative agriculture. Permaculture designs focus on effectively reusing energy and resources as much as possible before they leave the system. Rather than solely pulling resources from the earth, as many agricultural practices do, the flow system of a permaculture farm transfers energy from one element to another, and ultimately back into the ground.

While there is a lot more to come on this initiative, rest assured that it will not dilute our core focus at Amazing Space. We will still grow, enhance, and provide the best quality educational and inspirational experiences for those who visit our property.

I'm excited to share more with you as we progress over the coming months.

Champions of Nature

Throughout 2017, ICNC's board and staff have been working on a strategic plan to direct our next few years. This plan will be released in 2018, but one of the things that excites me the most is that it focuses first and foremost on how we can create Champions of Nature.

A Champion of Nature is someone who, regardless of their political beliefs or world views, believes that we should protect nature, not for our benefit, but for the benefit of future generations.

Champions of Nature ensure they interact responsibly with the environment and focus on making the right decisions, no matter how small they are. Champions of Nature are advocates of their resources and encourage others to make decisions that restore, not degrade the environment. Champions of Nature have fun, enjoy the outdoors, and drag their friends and family along for a breath of fresh air!

As we close out 2017 and look to another exciting year at Amazing Space and Etzel Sugar Grove Farm will you commit to be a Champion of Nature? ICNC can and will help!



impact story

EDUCATION



Jane Boyd Community House camps highlight equity in programming at the Nature Center

Kelli-Kennon Lane, Director of Education

Thousands of children walk through the doors of Indian Creek Nature Center for programs, and thousands more hike our trails with their families annually. The opportunity to create Champions of Nature is bountiful, and every Nature Center staff member and teacher-naturalist is committed to the education and care of children, regardless of who they are, where they come from, or the academic or social-emotional needs they might have. This philosophy—meeting children where they are—aligns with the concept of equity.

According to the Center for Public Education, equity is achieved when [children] receive the specific resources they need to be prepared for success. These resources (and, in our case, field trip experiences) are customized to exactly what *that child* needs to be successful. One size does not fit all. We are taking a close look at all of our educational programming and experiences to ensure we deliver equitable programming.

In 2017, Indian Creek Nature Center worked closely with Jane Boyd Community House to create three days of summer camps for children ages 4–12 participating in Jane Boyd's summer program. Each day covered a different topic: wetlands, prairie, and woodlands, complete with hands-on activities and hikes. Jane Boyd's mission is to enhance the academic, social and emotional wellbeing of children in the community, and provide access to recreational, cultural, arts and other opportunities they may not otherwise have. The partnership with Indian Creek Nature Center was created at the urging of Steve Allsop, a board member for both organizations, in an effort to increase programming opportunities at Jane Boyd that fit into this mission.

Megan Isenberg, Program Manager at Jane Boyd Community House, highlights the gap in outdoor experiences among Jane Boyd's participants: "Most of the kids we serve don't really experience nature beyond walking to and from school or around their neighborhood. They spend most of their time in



urban areas and for many, this camp was the first time they experienced hiking in the woods, being on trails, experiencing trees and wildlife. One younger kid was just blown away that things live in the water. It puts it in perspective when you see that it's all new to them."

We offer equitable programming by asking several questions of ourselves: Are we consciously planning for the cultural, academic, and social-emotional differences in the students we meet, such as in the case of the Jane Boyd campers described above? Do we provide high-level curriculum in all of our field trips? Do we provide support during field trips for our struggling students? Are our education team and teacher-naturalists trained and qualified to reach all learners? Are *all children and their families* welcomed and served with a quality program? Do all schools and students have access to scholarship funding? Do these funds flow to schools according to need? Finally, do we monitor our progress? Do we make adjustments when needed?

We wanted to ensure that our Jane Boyd campers not only had a fun experience, but that it was also educationally valuable. That is, did our campers learn something during their time at Indian Creek Nature Center?

Data from a camp post assessment of the kindergarten through third grade campers was remarkable, illustrating our work to create the next generation of Champions of Nature. For example, 88% of kindergarten and first grade campers enjoyed being outdoors during camp, 81% felt strongly about taking care of nature, and 89% agreed that a healthy environment is important for all living things.

Our second and third grade campers described “catching stuff with a dip net” and “being at the pond with the toads and ducks” as their favorite part of camp. One child remarked, “I learned certain birds fly quiet like an owl or loud like an eagle,” and another said, “The beaver population went from 60 million to six million.” These facts, while seemingly random, show us that the Jane Boyd Community House campers not only had a good time, but acquired new learnings over the three days.

Moreover, observation data showed major changes in camper behavior. We discovered a nearly 86% decrease in off-task behavior from the first day to the last day of camp, and an increase of over 60% in content-related questions posed by the campers. As one camper remarked, “This is a great place to learn.” Children are more willing to take educational risks if they can first experience a similar success in an environment that is approachable, accessible and presents a challenge.

Jane Boyd staff were also satisfied with the experience. “The staff at ICNC are fabulous,” Isenberg said. “They had 10 different staff members who were with kids each day, so the kids could be in small groups of 8 to 10, which gives kids a more meaningful experience. They also did a great job of accommodating different age levels by modifying activities based on age. It’s very rare that we get to go on field trips and do things in small groups like this. It was very fulfilling.”

In 2018 and beyond we are making intentional moves to provide equitable field trip experiences to preschool to high school students. This means identifying the zone of proximal development of our students (what they can learn with guidance) and planning to challenge them within their zone, leveraging relationships to push students forward, empowering students to reflect on their experience at the Nature Center, and providing instructional feedback to our education team and teacher-naturalists to improve their practice.

The Nature Center is continuing its partnership with Jane Boyd Community House in 2018 with another series of summer camps. We will build upon the successful program we’ve created for Jane Boyd students as we increase equity in all programming at Indian Creek Nature Center.

Thank you, business and organization volunteers!

Thank you to the following businesses and organizations who completed group volunteer projects at Indian Creek Nature Center in 2017.

BUSINESSES

- 🌿 Alliant Energy
- 🌿 Evergreen Packing Equipment
- 🌿 First Community Credit Union
- 🌿 Frontier Natural Products Co-op
- 🌿 Hy-Vee
- 🌿 Rockwell Collins
- 🌿 United Fire Group

ORGANIZATIONS

- 🌿 4-H
- 🌿 Americorps
- 🌿 Boy Scouts
- 🌿 Discovery Living
- 🌿 Four Oaks
- 🌿 Girl Scouts
- 🌿 Go Cedar Rapids
- 🌿 Iowa BIG
- 🌿 LAMBA
- 🌿 Linn-Mar School
- 🌿 Marion High School
- 🌿 Monarch Zones
- 🌿 Trees Forever
- 🌿 United Way
- 🌿 Vernon Middle School



Employees of Evergreen Packing Equipment built the now-beloved tipi in Hazelnut Hideaway!





Passion for connecting children to nature inspires Joyce & Mark Fleming's gift to outdoor playscape

Indian Creek Nature Center's Hazelnut Hideaway Outdoor Playscape, completed in 2017 at Amazing Space, is a natural wonderland for young children, the young-at-heart, families, and everyone who comes to the campus. With its gigantic turtle mound, grass weaving loom, spider web swing, hand pump water feature, and 18-foot-tall tipi, the opportunities for imaginative play are endless. It's exactly that focus—on free, imaginative play, exploration, and lack of formal structure—that inspired Joyce and Mark Fleming to invest the lead capital gift in creating Hazelnut Hideaway. They believe, and research overwhelmingly supports, that these opportunities are just what children need in a society in which their time is increasingly scheduled and spent connected to technology.



Joyce and Mark Fleming's connection to Indian Creek Nature Center runs deep. Joyce began volunteering as a teacher-naturalist (T-N) in 1979, only six years after the organization was founded. She worked with then volunteer Jan Aiels to recruit new T-Ns, conduct trainings, and create and execute new programs—including the 2nd grade program that is still going strong today.

Joyce's devotion to getting children outside and encouraging their sense of wonder in nature is rooted in her own connection to the natural world. It began with her upbringing on a farm, playing with her siblings in the woods until her

mother called them home by ringing an old Spanish bell. It continued through Joyce earning a degree in environmental science; raising two daughters, and supporting the family nursery business. Her time spent teaching children at the Nature Center was an extension, and an expression of, her passion.

"The whole idea of teaching a kid a sense of wonder—it doesn't take much to get the preschool and lower elementary kids to grab that. It's already there. You just need to show them it's important," Joyce said. "But the opportunity for kids to spend time outdoors at school is limited, and parents must be on board as well."

"Somewhere along the line, we just don't give priority to being outside. Parents got really busy doing extracurricular stuff with their kids. Unless the child has a parent who is interested [in the outdoors], they don't get that—parents need a willingness to bring kids outside," Joyce said.

This truth is at the heart of Indian Creek Nature Center's vision to create Champions of Nature. Only people who care deeply about nature, who feel a sense of wonder about it and understand its importance, will work to protect it. And that connection is made most easily in childhood. Joyce is so deeply involved that she then helped hire longtime ICNC Director of Education, Jan Aiels, who retired in 2016 after 24 years of service.



An outdoor playscape is the ideal place for hands-on activity, creativity, free play and exploration to occur. In a society suffering from “nature-deficit disorder,” as Richard Louv called this phenomenon in his book *Last Child in the Woods: Saving Our Children from Nature-Deficit Disorder*, spaces that connect people to the natural world are more important than ever. The benefits of connecting to nature have been well documented over the last two decades, and collectively, this body of research shows that children’s social, psychological, academic and physical health is positively impacted when they have daily contact with nature. In December 2017, Hazelnut Hideaway received national recognition as a Certified Nature Explore Outdoor Classroom for achieving these goals.

The time, talent and gifts of hundreds of people made Hazelnut Hideaway a reality. Through the Nature Center’s successful 2016 Giving Tuesday campaign, individuals donated more than \$9,000 to fund the purchase and installation of the final playscape elements. Many volunteer groups and individuals spent countless hours helping prepare the land and install the various elements. Joyce’s husband, Mark Fleming, is one of those individuals.

Mark’s many years of experience in the family business he started, Fleming Nursery, have proven an invaluable resource to Indian Creek Nature Center. In Hazelnut Hideaway, Mark did all of the earth-moving to create the turtle mound, and has helped with many other projects over the years, such as earth-moving work in the Nature Center’s Patterson Family Amphitheater. But the Nature Center has also helped him.

“On the business side, I tried to be responsible environmentally. I worked with Rich Patterson, Jean Wiedenheft [ICNC staff] a great deal, and learned about doing things the proper way, the way that works.”

“I think the most important thing is getting city people to appreciate nature and get away from the rigid structure and get back to appreciating the prairie, the trees, the grass; and you need to start it at a young age so [that appreciation] grows as they grow, and they have the memories of nature, because it’s so important to life for everyone,” Mark said. “The ICNC naturalists help children see the interconnection of life.”

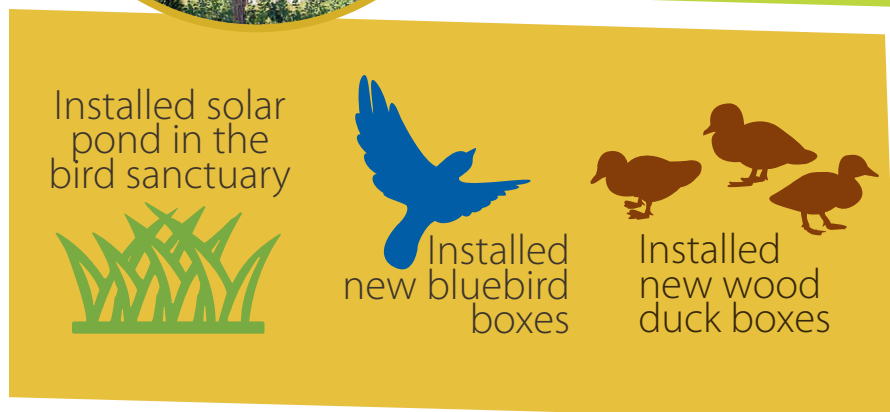
Joyce echoes his sentiment: “It is my passion to learn new things about the natural world and to share those with others, especially children. [At ICNC] I can find people who have the same passion and being around them inspires my soul to carry on.”

She adds, “It’s important for us to teach our children the sense of wonder that Rachel Carson taught us back in the ‘60s. There is only one Earth and what we teach our children about how to treat it will be the future we live in: whether it’s a healthy future or a dying one, it’s up to us.”



2017 Land Accomplishments

Indian Creek Nature Center's first full year on the the Amazing Space campus was 2017, and it was an incredible year! Check out the many accomplishments of our land team, making Indian Creek Nature Center an educational, functional and inspiring place.

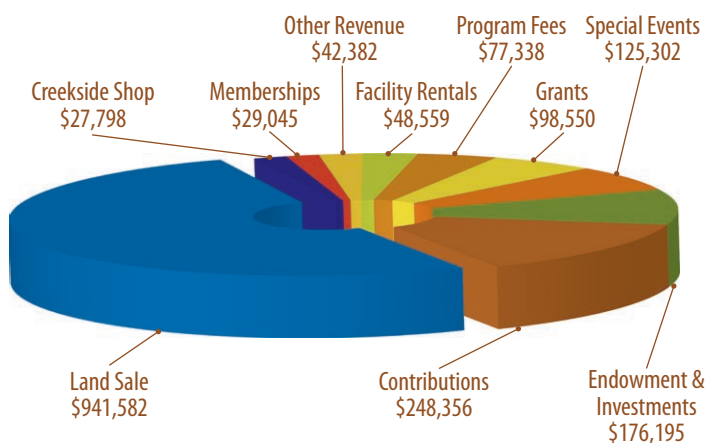


Installed four hoop houses for monarch rearing and research

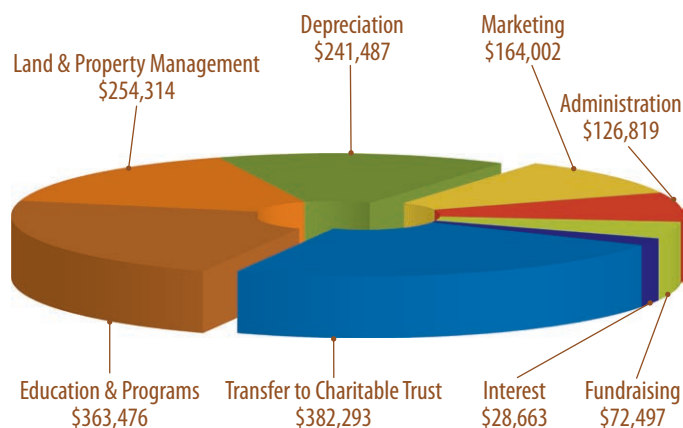


Financials

Total Revenues — \$1,815,107



Total Expenditures — \$1,633,551

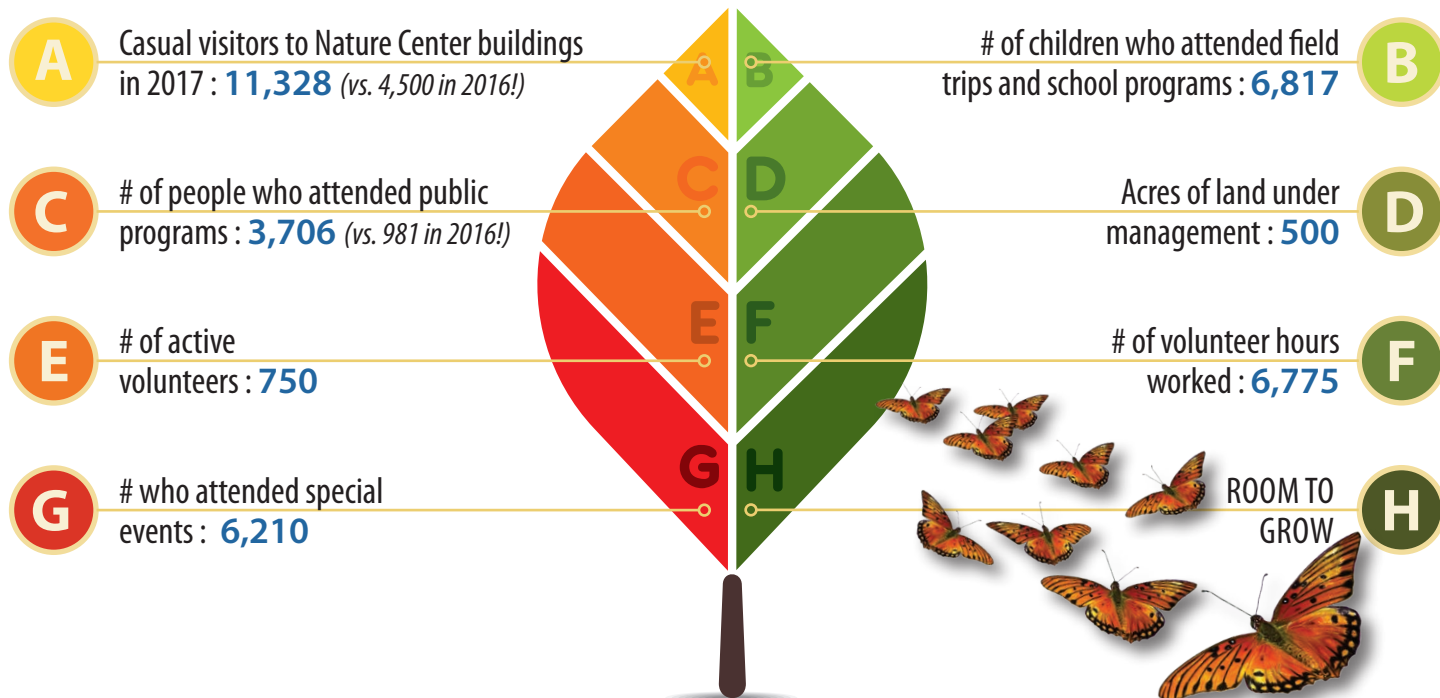


New Funds Invested in Endowment—\$544,393

The Friends of the Nature Center volunteer group, previously known as the Nature Center Guild, raised **\$27,397 in 2017**. The Nature Center is **grateful to the Friends group** for its many hours of hard work to put on the **Spring Plant Sale, Nature's Noel**, and the **Soup's On** soup supper. Indian Creek Nature Center's endowment funds grew to a total of **\$3,218,388 as**

of December 31, 2017. This represents an increase of over **\$1,300,000 since 2012!** These investments generated **15% of ICNC's operating income in 2017**. In 2004, ICNC received a donation of eight acres of land from Carleen Grandon to be sold. This occurred in 2017 and the earnings were invested into endowed funds.

By the Numbers — for the year of 2017





REJUVENATION OF THE SOUL The Unheralded Mission of the Nature Center

Rich Patterson, Director Emeritus

Adjacent to a Nature Center trail sits a nondescript blob of decaying wood. A walker's eye is more likely to focus on a magnificent nearby sycamore.

The diminishing basket-sized hunk of decaying wood, perhaps more than anything, signifies the core value of the Nature Center. When it was founded in 1973 what's now a thick forest bordering Indian Creek north of Otis Road was open grassland. Cattle had grazed there for a century, helping keep new trees from sprouting. But, one tree remained to remind us of resettlement days.

The silver maple spread its foliage across nearly a quarter of an acre. Dubbed "Old Henry" by school kids about 40 years ago, hardly a child visited in the next two decades without pausing to marvel at the old tree's size and age. Once back at school many created crayon drawings of their Nature Center experience, and Old Henry appeared in the art of innumerable children.

Henry aged and went into a decade-long decline. Although its massive trunk remained, leaves shed and branches fell. Sometime during that period an unknown visitor adorned Henry with a wreath of pine boughs arranged around its girth. Corn ears were placed on the boughs to delight squirrels and deer. The mystery visitor came annually after Thanksgiving as the tree gradually melted into the landscape.

Now, all that's left is the small scrap of soggy wood. It will soon disappear. Yet, garlands still appear around the remains just before Christmas. Years after the tree's death its memory still inspires the secret decorator as it physically disappears into the earth.

The Nature Center provides awesome opportunities to people. Scan the website and note the varied educational programs, opportunities for outdoor recreation, and special activities, like yoga, to foster mental and physical contentment and growth.

What's not printed is the intangible inspiration and peace offered free by acres of wildland nurtured by the Nature Center. It is a peaceful place for solitude, exercise, and reflection where people connect with a natural heritage that has otherwise become distressingly distant in this modern world.

Staff and volunteers sometimes see evidence of the Center's silent visitors, like the person who adorns the remains of Henry. Often, they don't see someone quietly leaning against a tree in contemplation, but they are there.

Nature is a powerful positive force for people in times of emotion. When joyful, humans often gravitate to open vistas, like beaches and mountaintops. When grief stricken they seek intimate contact with the healing balm of close woodlands.

Shortly after the 2008 flood, for example, many who had lost homes and businesses found solace in the Center's natural beauty. Hard to count and often impossible to see, they came and left refreshed.

"Everybody needs beauty as well as bread, places... where nature may heal and cheer and give strength to body and soul alike."

—John Muir

It is the Nature Center's honor and duty to protect the beauty and solitude of wild places to make our world a better place for the people who need nature's nurturing embrace.



Old Henry ►

2017 Donors and Members

Members

Lifetime Members

Jan Fitzpatrick Aiels 2017
Kathleen & Tom Aller 2016, 2017
Robert & Elizabeth Allsop 1992
Richard & Candy Altorfer 1993
Walter Badger 1993
Pat & Judy Baird 1989
Drs. Arthur & Marian Barnes 1996
Greg & Teresa Barnett 2014, 2017
Elizabeth T. Barry 1998
Mary Ann Barry 1998
Robert Barry 1988
Jann & Gordon Baustian 2016
Charlie & Pat Becker 1994
Tony Bedard 2017
Gordon Bena 2013
Rose Bena 2005
Beth Blakeslee 1988
Bill Bloomhall 2003
John, Cindy & Bailey Bloomhall 2011
Jan Bloomhall 2003
Gladys Bock 1999
Diane Bradbury 2016
Arlene Burns 2013
George & Anne Busha 1996
Sandy Carson 2015
Diane Charipar 2000
DuWayne & Jennie Davidson 1988
Ann Davis 1989
David DeWalle 2016
Brad & Melissa Doyle 2016
Mike & Mary Earley 1991
Stan & Carol Eilers 1999
Dan Engle 2017
Norman & Floy Erickson 1990
George Etzel 2016
Steven Eyanson Family 1988
Mark & Joyce Fleming 2016
Dale & Helen Fye 1993
Don & Mary Lou Gallagher 2013
Richard & Nancy Garbersen 2000
Dean & Laura Gesme 1991
Dean & Ann Gesme 1985
Nick & Kay Gloe 1990
Dr. Eugene & Carleen Grandon 1991
Dennis Hagan 2001
Sheila Hahn 1999
Jeff & Julie Hamilton 2002
Roy Hampton 1991
Nancy & Russ Hansen 1990
Don & Mary Lou Hattery 1993
Ed & Jo Hemphill 1990
Jeff & Lisa Henderson 2016
Ralph & Jeanne Hepker 1997
Tom Hess & Nancy York 1996
Jared & Carol Hills 1988
Gene Hinman 2016
Joe Hladky 1997
Sarah Huey 2006
Gilbert & Donna Janes 1994
Vyrl Justice 1994
Robert & Janis Kazimour 1992
Dr. Reuben Keegan 1988

Marilynn Keller 1993
Dr. Mary Kemen 2016
William L. & Patricia Kennedy 2000
Dorothy Klinkhammer 2012
Russell & Louise Knapp 1989
Sherry Kneeland 2016
Hall & Marion Koontz 1989
Dr. Keith & Cheryl Krewer 1998
Dave Kubicek 2002
Ann Ladd 2007
Jim & Toni Landenberger 1988
Greg & Kim Larson 2004
Joe & Patty Lee 1993
Stephen & Jan Locher 2000
Alma Long 2012
Garnet Mader 1999
Frank & Marilyn Magid 1998
Kent Mattison 2016
Jim & Traci Maxted 2004
Richard & Sue McGaughy 1993
Ron & Toni McGraw 1988
Sandy McVey 2000
Laura Meade 2016
Dr. William & Amelia Meffert 1988
Patricia Meier 2017
Emily Meyer 2016
Virginia Michalick 1999
Bryce & Jeanne Miller 1988
Doug & Marilyn Miller 2000
Teresa Mims 2003
John & Cynthia Monroe 1988
Judith Moore 2000
Paul & Jennifer Morf 2003
Dave & Lisa Morris 2016
Clint & Gale Mote 2001
Donald & Melinda Muller 1998
Ron & Sue Neil 1996
Michael & Tiffany O'Donnell 2004
Mark Ogden & Iris Muchmore 1993
Susan & Abraham Oglanian 1996
William & Jeannie Olinger 1992
Joe & Darlene Parrott 2002
Rich & Marion Patterson 2016
George & Freddie Pederson 1988
Charlotte Pence 2003
R. Paul & Terry Penningroth 1992
Barb Perkinson 2016
Chuck & Mary Ann Peters 1992
Stan Pfoff 2016
Fred & Janet Pilcher 2002
Jeff Portman 2017
Christine Powers 2010
Sigrid & Curt Reynolds 2002
Kay Riehl 2010
Charlie Rohde 2012
John & Becky Rooney 2002
Marvin Rops 2016
Tresa Rops 2016
George & Jean Ross 1991
John & Ann Sagers 1993
Anne & Paul Salamon 1990
Dietrich & Helen Schaefer 2002
Laura Stimple Schmidt 2003
Joel Schmidt 2016
Elizabeth Schott 2008

John Schuldt & Mary Moore 1996
Lester Sendeck 2013
Marty & Julianne Smith 2005
Les Smith 1999
Brian Soenen 2014
B B Stamats 1991
Lonnie Stein 1988
Sally Stephenson & Kevin Collins 2000
Doug Stimple 2003
Drew Stimple 2003
Terry & Marlyse Strait 2016
Rosalie Strang 1992
John Sweeney 1989
David & Mary Taylor 1991
Judge William & Dr. Julianne Thomas 1989
Cynthia & Janak Adhikari 1991
Marilyn & Don Thomsen 2003
Jean & Jim Tinker 1993
Karen & Tom Tjelmeland 1999
Douglas & Celia Van Metre 1995
Justin Voss 2017
Elizabeth Weland 1992
Jennifer Welton 2017
Judith Whetstine & Bob Rush 1997
Jim White 2016
Phil & Laura White 2016
Sarah Wickenkamp 2001
Esther Wilson 2016
Karen Zazza 2008

Protector Members

Greg & Terri Churchill
William & Winifred Shuttleworth

Steward Members

Travis & Amy Fell
Rob & Lori Frett
Dick & Nikki Kettelkamp
Dave & Janice McInally
Jim & Laure Peters Family
Sara Rynes-Weller
Jill Thies

Explorer Members

Rick & Linden Aerts
Bill & Lu Barron
James Beranek
Neil & Renate Bernstein
Barry & Gilda Boyer
Scot Brown & Julie Lammers
Bill & Carol Calloway
Kathy & Brad Colton
Cheryl Cook
Bill Davis & Kathryn Franzenburg
Brooke & Andy Fitzgerald
Suresh Ganu
Karla & Gordon Gibson
Daniel & Melissa Glasser
GO Cedar Rapids
Diane Handler
Mark & Deb Hartung
Jeff & Lorie Hines
Cheryl Hoch & Eric Evans
Susan Horak
David & Kristin Janssen
Krista Kaminski
Roger & Christine Kirpes
Ann Koppenhaver & Mike O'Brien
Brad & Tama Lang

Not a member yet? Join and receive these great benefits:

Receive invitations to exclusive members-only events!

- 🌿 Etzel Sugar Grove Farm Members-only Tour (join like-minded supporters to get an insider tour of our restorative farm)
- 🌿 Guided Fall Leaf Walk for Explorer level members and above (a slower paced, guided hike for those who enjoy viewing the splendor of nature's autumn glory)
- 🌿 Monarch Fest Members-only Preview (come early and enjoy breakfast and a preview of the day's events)

Enjoy additional benefits depending on your membership level, including: free snowshoe rentals, free Maple Syrup Festival tickets, early access to the Spring Plant & Art Sale, Creek Camp summer nature camp discounts, sustainable living tips delivered to your inbox, and more!

To learn more about membership levels and benefits and to join today, visit indiancreeknaturecenter.org/member or call Nancy Lackner at (319) 362-0664 x309.

Jo Miller & Chris Turkovich
Jill & Chuck Monahan
William & Diana Neppi
Bill Prowell
John & Karen Roltgen
Sara & Jim Sauter
Derin Sherman
Jerry & Nancy Shirk
Dan & Carolyn Thies
Jen Visser & Jacob Barnes
John & Lynn Weber

Household Plus Members

Nancy & Brice Anton-Jensen
Plenny & Colleen Bates
Robert & Regine Beer
Shirley & Terry Benfer
Arlene & Bill Boots
Beamer & Connie Breiling
John & Elizabeth Buckeridge
Bob & Lois Buntz
James Burke & Maria Doce
Bill & Lorrie Copper
Charles Cox
Charles Crawley & Libby Slappey
Jason & Stephanie DeWitt
Steve & Kay Dummermuth
Diane Engelhardt & Mike Duss
Megan & Sean Etheridge
Jack & Nancy Evans
Tom & Patricia Fehlberg
Jeff & Christy Frese
Rose Gabe
Kay & Harlan Graber
Harlo Hadow & Joy Stoker-Hadow
Stephanie Hall
Dave & Barb Hartle
Kate Hawkins
Tim & Katie Hill
Steve & Kay Jackson
Kay Johansen & David Osterberg
Randi & Doug Juergens

Kelly & Chris Kemmerling
Melanie & Jeff Koolbeck
Dale & Marlys Krohse
Connie Lehman & Tom Podzimek
Thea Leslie
Barb & Les Lorenz
Tiffany Marks
George & Janelle McClain
Bob & Tara Moorman
Christine & Scott Newlin
Joel & Jennifer Nizolek
Judy & Barnes O'Donnell
Scott & Penny Olson
Kate O'Neill
Dave & Anne Parmley
Delbert & Mary Ann Paulsen
Matt & Cathy Poduska
Megan Richardson
Christine Ritchie
Mark & Rebecca Russell
Mark & Kris Sargent
Jane Schildroth & Peter Jaynes
Steve & Julie Schuett
Heather Smith & Seth Friedman
John St. John
Bill & Anne Stamats
Martin & Janet Stimson
Andrew & Stephenie Suggs
Rick & Sandra Thorington
Bonnie Toben
Matteo Tormene & family
Trees Forever
Eric & Karen Watson
Kristen & Kyle Wilcox
Kevin & Mary Nugent Woods
Mark & Tracy Zimmerman

Household Members

Johanna & Terry Abernathy
Jeanette & Jeff Abraham
Keith & Cheryl Achey
Marsha Acord & Bob Meeker
Kristin Addis
Sheri Albrecht & Steve Carriger

Craig & Debbie Aldrich
Melanie Alexander
Molly & Derek Altorfer
Jeff & Shirley Andersen
Mark Andersland & Mary Susan Pruzinsky
Bob & Arlene Anderson
Dave & Sue Anderson
Neil & Denise Anderson
Gary Anhalt
Mackenzie & Reegan Appleby & Dylan Nielsen
Dan & Marianne Arndorfer
Bob & Beverly Arnold
Leann & Mike Arnold
Heather & Dave Atwater
Betty Axline
Laurie Azeltine
Bruce Bachmann & Nancy Sauerman
Barbara Baird
Fred & Ruth Balster
Andrew & Shari Barden
Tom & Rebecca Barker
Gerry & Kathy Barr
Ron & Kay Baty
Janet & David Baumgardner
Kara Beauchamp & Jeff Walberg
Michael & Karen Becker
Anna & Brian Behning
Dave & Susan Benderson
Sarah & Mark Benesh
Linda & John Biederman
Amber Blomme
Sandra & James Boddicker
Jennifer & D. Allan Boettger
Jo & Scott Bogguss
Steve & Cathy Bonnett
David & Martha Booth
Richard & Maureen Boots
Roger, Mary & Katy Boulet
John & Julie Bradley
Paula Bradnan
Joan Brandt
Barry & Michelle Breffle
Tom & Pat Brennom
Jeremy & Selma Brigham

Bob & Jackie Brimmer
Nadine & Bo Brock
Bob & Ann Bromley
Paul & Nina Brundell
Chris & Nicky Bruns
Arnold Bucksbaum
Cynthia Burdakin
Jim & Sandy Burm
Gayle & Kate Buroker
Clarence & Char Burton
Robert Buser
Jamie Bushman
Kaitlin & Craig Byers
Robert & Sharon Caldwell
Barb & Maury Campbell
Jeanne Campbell & Randy Schaffer
John & Mary Campbell
Jane & Chris Carlson
Lynne Carlson & Doug Beach
Loren & Kelly Carolan
Steve Carpenter & Mary Magner
John Chaimov & Jenny Schulz
Mary Bess Chester
Mary & Jeff Christensen
Scott & Susan Clark
Natalie & Phillip Clouse
Nancy Cobb & Terry Trimpse
Lori Collingwood
Walt Colquhoun & family
Mary & Kevin Conley
Heather Cook
Molly Cook
Stephanie Cornell
Tim Crumley
Matthew Danielson
Laurie & John Dawley
Dan & Sheila Deininger
Ken & Lynn DeKock
John DePaape
Amanda & Chris DeSalvo
William & Karen Desmarais
Bryan & Eileen Dietman
Beth & Devon Dietz
Brian & Cassie Dohmen
Emily Doolittle & Jacob Guelf
Rich & Mary Doyle
Ian Draves
Maria & Chad Dummermuth
Steve & Terese Dummermuth
Greg & Wendy Dunn
Denis & Jeanne Duppong
Dina & Jon Dusek
Suzanne Duthler
Kelly & Liesl Dzuris
Mason & Ann Eckley
David & Shearon Elderkin
James & Colleen Elliott
Scott Engledow & Christine Lehman-Engledow
Sally & Lou Fairchild
Carlis & Kelly Faurot
Jan & Jim Federer
Warren & Pam Feerer
Mike & Joan Felton
Jen & Don Finn
Al & Ellen Fisher
LaVerne Flagel
Emily Flowergarden
Melanie & Mike Fortin
Bruce & Julie Frana
Amanda Freese & Family
Chris & Kelly Frey
Lois Friday
Ron & Corinne Gambach
Elwood & Cindy Garlock
Les & Katrina Garner
Jeff & Janet Gebert
Elisa & Jeff Geneser
Melvin & Shirley German
Ruth Gerst

Russ & Barb Glime
George & Chris Gochenouer
Ron & Pat Gonder
Steve & Lynn Goode
Nathan & Wendy Greene
Bev Grindeman-Adams & Dan Adams
Bill & Nancy Grindle
Kris & Deborah Gulick
Marc & Cathy Gullickson
John & Michelle Hackbarth
John Hall
Kathy Hall & Terry Pitts
Kathleen J. Hall
Laura Hammond
Bruce & Barbara Hamous
Bill & Kathleen Hanes
Heidi & Scott Haney
Dave & Bev Hannon
Tom & Mary Hansen
Marie Hargis
Kimm Harris
Jade & Brad Hart
Peter Hart
David & Heather Hayes
Frank & Marge Helsell
Kay & George Henry
Dorothy Hershner
D.J. & Janet Hinker
Keith & Helen Hixson
Elizabeth Hoagland
Russell & Gloria Hoke
Wayne & Gay Holstine
Louise & Greg Holtz
William & Jeannette Holtz
Barb & Don Horak
Doug & Patti Horton
Polly Horton
John & Pat Houar
Bob & Karen Hoyt
Tony & Suzanne Huebsch
Tom & Megan Hughes
Janessa Huilman & Trevor Foss
Karla & Jonathan Ice
Barbara & Wayne Ihde
Jon & Jodie Janda
Larry & LouAnn Jayne
Steph & Nick Jelinek
Kim & David Jennings
Glenn & Marjorie Jensen
Beth & Preston Johnson
Don & Amy Johnson
Bob Jones & Kate Van DeWalle
Kathy Juba & Bob Butikofer
Robin & Judy Kash
Jim & Connie Kennedy
Meg Kiekhaefer & Gerhard Strohmmer
Fred & Heidi Kiser
Elisabeth & Josh Kissling
Mike & Barb Klappholz
Dennis & Marni Klouda
Linda & Bruce Koehler
Steve & Sue Koenck
Richard Kohl
Kelle Kolkmeier & Dan Sauerbrei
Kelly & Thies Kolln
Renee & Dean Konrad
Roger & Sharron Konzen
Whealen & Laura Koontz
Mary Kopecky & Thom Lusardi
Ernie & Sue Kosek
Jim Kovarik
Ken & Helen Kupka
Kerry & Kathy Kupka
Terry & Shirley Lamb
Ben & Sheena Lammers & Ben and Sheena
Kay Landuyt & Larry Robinson
Steve Larson
Sven & Carol Larson

Barbara Lebsock
Bernie & Deanna Lettington
Leo & Zinnia Lim
Hilery Livengood & Ben Fashimpaur
Jim & Myrna Loehrlein
Mark & Ann Lorenz
Devon Lovell
Wayne & Noma Lucas
Roberta & Dave Lympus
Mike & Gladys Maas
Betty Mangel
Alison Martin & Chris Morris
Cynthia Martin
Brent & Diane McAfee
Dan & Sally McAleer
Roxi & John McCrane
Karla & Dan McGrail
Thomas & Sandra McIntosh
Karla & Dan McMurrin
Bob (Mick) & Jo Ann McNiel
Steve & Pam Menzner
Brenda & Mike Meshak
Dale & Linda Meskimen
Steve & Theresa Mickelson
Vincent & Rachel Mills
Jean & Gordon Minehart
Frank & Cheryle Mitvalsky
Tim & Stephanie Mobeck
Bob & Sue Mollman
Jim & Rose Marie Monagan
Leeann Moore
Bob & Susie Moran
Andrew & Reagan Morf
Darrel & Middie Morf
Brad & Sara Morgan
Richard & Laurie Moritz
Mount Vernon Road Tire
Chris & Brandi Mueller
Ryan & Alicia Murphy
Connie & Robert Mutel
John & Marcia Myers
Ron & Margaret Nelson
Bruce & Jane Nesmith
Melonee & David Nichols
Don & Marty Norton
Jim & Kristin Novak
Richard & Mary Nurre
Bill & Vicki Oakley
Fred & Joy Ochs
John & Mary Jo O'Connell
Michell O'Connor
Don & Gayla Ohde
Nicholas Olberding
Dave & Carolyn Oliver
Ron & Sue Olson
Steve & Susan Ovel
Jerry & Marilyn Owen
William & Tandra Paeth
Tony & Mareka Pagliai
Don & Linda Palmer
Joseph & Gretchen Paricka
Henry & Claire Patterson
Lisa & Rick Paulos
Walter Pencil
Jayne Peremsky
Emily Petzelka
Bev & Ian Philippott
Charles Ping & Linda Jensen
Bonnie Pisarik & Joyce Steffen
Bob & Denise Potter
Pinky & Flo Primrose
Katie & Sam Pritchard
Dow & Susan Prouty
Nancy & Tom Pugh
Jon & Mary Quass
Kevin Railsback
June & Peter Rainbow
David & Mary Jo Rater
John & Janet Reasoner
Denny & Jan Redmond
Brandon & Marcie Reynolds
Berta & Ade Ringold

Danielle & Randy Rings
Blaine Rittmer
Kristin & Mark Roberts
McKenzie & Nate Robinson
Michele Roddey
Jim & Jean Rogers
Ann & Henry Royer
Myron Rupp
Arlen & Cheryl Russell
Kevin & Anna Ryan
Tom Sabotta
John & June Sackett
Judy Saluri
Ed Sauter
Robert Scarth
Duffy & Belva Schamberger
Allan Schau
Jane Scheer
Rich & Donna Scheer
Mary & Robert Schell
John & Carolyn Schmidt
Peg & Stephen Schmitz
Bill & Jean Schneider
Dan Schott
Rick & Michelle Schrader
Maxine & Arlo Schultz
Doug & Jane Schumacher
Tim & Jenni Semelroth
Richard Sentman
Phil Shaff & Judy Shaff
Kori & Tim Shane
Jim & Michelle Shaw
Michael & Becky Shive
Stacy Siek
Ron & Valerie Sintern
John & Sally Sklarsky
Jacey & Joe Slaton
Kelly & Jody Smith
Matt & Lori Smith
Pat Smith
Mick & Jeanne Snodgress
Sam & Connie Snyder
Peter & Ida Martin Sorensen
Elizabeth & Ross Sowell
Rob & Carolyn Spading
Karen Speirs
James & Nancy Spencer
Larry Spina
Judy Stammeyer
Kent Steenblock & Debra Salz
Roger & Oline Stigers
Bob & Micki Stoffel
Dale & Nancy Stout
Gary & Susan Streit
Anne Suggs
Wilber & Pam Suiter
Melissa Summers
Keith & Nancy Sutherland
Marilyn Sweet
Byron & Julie Tabor
Brian & Lauri Talyat
Matt & Barb Teply
H. Raymond & Tammy Terpstra
Mike Tertinger & Maura Pilcher
Linda Toms
Karen Tousey
David & Pat Treneman
Joy Twentyman & Ayden Crock
Amy Valley
Anita Van Dyke
Dan & Sara Veerhusen
Julia Venzke & Jamie Ward
Esther Vorel
Rich Wagor
Jessica & Dan Weiser & Family
Lynette Welch & Dennis Oberreuter
David & Michelle Wenzel
Sue Weston
Jim & Mary Ann Wetherbee
Brian & Kristin White

Michael & Emily White
John & Caitlin Wiedenheft
Marty & Diane Wiesenfeld
Leanne & Nathan Williams
Paul & Gail Williams
Scott & Ursula Williams
Keith & Pat Williams
Bonnie Winslow-Garvin
Mark & Joyce Woldruff
Brad & Margaret Wolter
Jason & Leslie Wright
Sara Wright
Jim & Peggy Zalesky
Joann & Fred Zehr
Erica & Joe Zito

Individual Members

Wayne Aldrich
Gretchen Aschoff
Dwayne Augspurger
Margo Ballou
Jane Bancks
Nina Bappe
Phyllis Barber
Jan Basemann
Nora Becker
Charles Beusch
Julie Billett
Barbara Bloomhall
Marilyn Bowman
Shirley Bradley
Jean Brennehan
Susan Bright
Mary Anne Brindley
Frieda Brokaw
Nancy Brown
Kathy Burns
Robert Butler
Jan Caldwell
Deborah Chehak
Ruie Chehak
Thea Cole
Kim Cushing
MaryAnn Dawson
Betty DeBrower
Colton Desmarais
M C Dickmeyer
Deb Dunek
Beverly Dyott
Barb Farmer
Becky Fenelon
Kevin Fox
Carol Frischkorn
Susan Frischkorn
Jennifer Germaine
Sharon Gillespie
Dennis Goemaat
Kathy Good
Bill Gould
Tim & Jill Gustin
Sara Haas
Debbie Hahn
Doris Hamilton
Alicia Harvey
Nancy Hasek
Vaclav Hasek
Paul Haskell
Roger Heidt
Mildred Hemesath
John Hendricksmeier
Kathy Hendricksmeier
Courtney Henecke
Linda Henecke
Greg Herring
Kate Hladky
James Horak
Denise Houlahan
Karen Howie
Gingie Hunstad
Gene Jahncke
Jill Jamieson
Forest Johnson
Jill Jones
Shari King
Joni Kinkad
Flora Kitzman
Denise Klemp

Nancy Klopp
Tom Klug
Lois Kopecky
Vickie Kriz
Jan Kvach
Audree Larson
Michelle Lecompte
Everett Lehrman
Robin Level
Carla Lindball
Dixie Mackie
Scott Mansfield
Helga Mayhew
Cae McCalley
Christine McCarthy
Larry McGrath
Diane McIntosh
Diane Melsha
Anthony Merulla
Em Merulla
Linda Meyer
Denise Mineck
Sean Mooney
Barbara Moore
Matt Moore
Tom Moran
Mary Moscrip
Patrick Muller
Don Murphy
Lisa Nagle
Robert Nassif
Julie Newgard
Norma Newmeister
Sandy O'Hara
Carol Olson
Terry Osanski
Angie Panagos
Diana Rae Patten
Nancy Patterson
Ken Paulsen
Marilyn Peacock
Jo Pearson
Shirley Pfeifer
Morris Pounds
Virginia Pugh
Dick Quetsch
Silvia Quezada
Sharon Ramsay
Barbara Rhame
Roy Rhodes
Michael Sacora
Virginia Scheffer
William Scheible
Terri Schott
Teresa Sedlacek
Lynette Seigley
Kathy Severson
Bobbie Shaffer
Noralee Sherwood
Marilyn Sippy
Alice T. Smith
Claire Smith
Joanne Smith
Larry Smith
Martin T. Smith
Steve "Keith" Snow
Margaret Speers
Barbra Stary
Carole Stephen
Marilyn Stoecker
Carolyn Stucker
Christine Summers
Robert Swem
Karen Taylor
Jerene Thomas
Shirley Thornton
Ruth Van Tol
Conner Wade
Loralee Walker
Nadine Wax
John Weyer
Marcia Whiteford
Donna Wisnously
Bev Wren
Amy Youngstrom
Dean Zimmerman



Individual Donors

\$25,000 and up

Terry & Marlyse Strait

\$10,000-\$24,999

Donal Barry
Estate of Herbert L Eckert
Estate of Janice Teeter
Mike and Esther Wilson

\$5,000-\$9,999

Anonymous
Sheree & Ogden DeWitt
Rohde Family Charitable
Foundation

\$1,000-\$4,999

Bob & Beth Allsop
Bob & Arlene Anderson
Anonymous (many)
Shirley & Terry Benfer
Scot & Jane Christiansen
Barb Farmer
Rose Gabe
Richard & Nancy Garberson
Sheila Hahn
Dave Hinman
John Kerr
Doug Kopp
Tom & Nancy Lackner
Brad & Tamra Lang
Alma Long
Michael & Lisa McGrath
Dennis & Jean McMenimen
Bill & Mimi Meffert
Mike & Jane Melloy
Virginia Michalick
Dave & Lisa Morris
Ryan & Alicia Murphy
Susan & Abraham Oglanian
Dave & Anne Parmley
Chuck & Mary Ann Peters
Charlie Rohde
Sara Rynes-Weller
Anne & Paul Salamon
Tim & Jenni Semelroth
Lester & Ruth Sendek
Sally Stephenson & Kevin
Collins

Bill Davis & Kathryn
Franzenburg
Bob Davison
Pat & Carol Deignan
Frances Dows
Laura Dows
PJ Dows
Cindy Edmonds
Margaret Ekroth
Mitchell Estling
Brian Fagan
Travis & Amy Fell
Al & Ellen Fisher
Don & Mary Lou Gallagher
Luke Gullickson
Sarah Halbrook
Tom & Marlys Harriott
David & Heather Hayes
Jane Haynes
Larry & Jan Helling
Lisa & Jeff Henderson
Jeff & Lorie Hines
Bob & Karen Hoyt
Steven & Mary Keane
Mary Kemen & Brian
Randall
Jim & Connie Kennedy
Anne King
Pierre Kisting & family
Matt & Amy Krigbaum
Lisa Lepic
Clay & Becky Lindwall &
Family
Larry McGrath
Laura Meade & Bill Werner
Peggy & Jim Meek
Kate & Dick Minette
Andrew & Reagan Morf
Brad & Sara Morgan
Alan Mroch
John & Marcia Myers
Nancy O'Connor
Mark Ogden & Iris
Muchmore
Scott & Jan Overland
Bill Prowell
Sigrid & Curt Reynolds
Danielle & Randy Rings
Becky Scheetz
Frieda Schmitz
Mark & Kara Scott
John & Sally Sklarsky
Hunter & Tiffany Skogman
Brian & Ann Soenen
Tom & Amy Stanczyk
Dana Stanford
Gary & Susan Streit
Marilyn Sweet
Dan & Carolyn Thies
Karen & Tom Tjelmeland
Marian White
Sarah Wickenkamp
Wilson & Vicki Wiedenheft
Richard & Ann Woodward
Joann & Fred Zehr

Up to \$249

Tim Adams
Cynthia & Janak Adhikari
Craig & Debbie Aldrich
Kelly Allen
Carolyn Allen
Morris & Diane Allen
Kathleen & Tom Aller
Dean & Glenda Alshouse
Molly & Derek Altorfer
AmazonSmile Foundation
Mark Andersland & Mary
Susan Pruzinsky
Steve & Vicki Archibald
Scott & Sheryl Arensdorf
Dan & Marianne Arndorfer
Bob & Beverly Arnold
Leann & Mike Arnold
Kathryn Arnold
Clark Arons
Bruce & Darcy Aune

Abbott B & Joan M Lipsky
Fund
Rick & Linden Aerts
Emily Anderson
Helen Arnold
Mary Arnold
Kevin Arnold
Stephen Arnold
Andrew & Shari Barden
Susan Brees
Jean Brenneman
Arlene Burns
Charles Crawley & Libby
Slappey
Sandra Cummings

Matt & Rachel Bailey
Sara Baker
Fred & Ruth Balster
Bank of America Employee
Giving Campaign
Phyllis Barber
Todd & Melissa Barker
Marian Barnes
Gerry & Kathy Barr
Bill & Lu Barron
John & Pamela Baseler
Catherine Basile
Patrice & James Bazan
Michael & Jennifer Becker
Laura Behrens
Liz & Lee Belden
Matthew Beltrami
Benevity Community
Impact Fund
James Beranek
George & Rebecca Bergus
Neil & Renate Bernstein
Anya Bernstein
Kevin & Lori Bestick
Cathy Bigelow
Lee Birchansky
Jim & Connie Birmingham
Rich Block
Amber Blomme
Pat & Don Boland
David & Martha Booth
Guy & Ann Booth
Bob & Sheri Bouton
Marilyn Bowman
Barry & Gilda Boyer
Shirley Bradley
Paula Bradnan
Barry & Michelle Breffle
Else-Marie Breuer
Jeremy & Selma Brigham
Rebecca Brimeyer
Frieda Brokaw
Dave & Kelly Broussard
Scot Brown & Julie
Lammers
Connie & Wayne Brown
Matthew Brown
Daniel Bruegge
Martin T. Bruns
Chris & Nicky Bruns
Patty Bryant
Alan & Sue Buck
Arnold Bucksbaum
Bob & Lois Buntz
Diane & Dave Burke
Jim & Sandy Burm
Gayle & Kate Buroker
Mick & Carole Butz
Susan & Frank Camp
Mary Cannon
Jessica Carey
Kerry Carleton
Jane & Chris Carlson
Keith & Fonda Carris
Greg & Marianne Carter
Rod & Betsy Caszatt
Stacy & Bob Cataldo
Joan Chadima
John Chaimov & Jenny
Schulz
Susan Chamberlain
JoAnn Charlson
Ruie Chehak
Kiley Chihak
Brigid Christianson
CliftonLarsonAllen LLP
Employees
Don & Toni Clow
Melissa Clow
Dorothy Coffman
Nancy & Philip Coffman
Lori Collingwood
Paul & Nancy Collins
Walt Colquhoun & family
Kathy & Brad Colton
Jean Cooper
Bill & Lorrie Copper

David Crumley
Kim Cushing
Marjorie Daft
Alice Daugherty
Mike David
Duwayne & Jennie
Davidson
Cherie Davis
MaryAnn Dawson
Kathryn Deetz
William & Karen Desmarais
Marie & Steve DeVries
Dave DeWalle
Randy & Rose Dezsi-Kirby &
Elizabeth Dezi
Beth & Devon Dietz
Marla Dinnebie
Judith Dirks
Lynda Dirks
Leslie Dorosin
Rich & Mary Doyle
Abby Drenth
Michele Druker
Steve & Terese
Dummermuth
Richard & Faye Taylor
Durkee
Dina & Jon Dusek
Tim Dwight
Linda East
Ann Edwards
Stan & Carol Eilers
Gary & Denise Ellis
Diane Engelhardt & Mike
Duss
Larry & Marsha Erb
Ardy & Jerry Erickson
Randy Ernst
Denise Erusha
Tom & Pat Ervin
Dixie & David Estrem
Kate Evans
Randy & Vicky Evans
Elizabeth Farmer
Warren & Pam Feerer
Jen & Don Finn
Brooke & Andy Fitzgerald
Lindsey & Ryan Flannery
Emily Flowergarden
Frank Fodero
Karen Fountain
Kevin Fox
Bruce & Julie Frana
Dick Freeman
Rita Frey
Frontier Natural Products
Co-Op
Ed & Jean Fry
Dale & Helen Fye
Sara Gaarde
Andre & Lisa Gallet
Ron & Corinne Gambach
Suresh Ganu
Elwood & Cindy Garlock
David & Susan Gehring
Dick & Deborah George
Thomas Getta
Karla & Gordon Gibson
Matt & Katie Giorgio
Russ & Barb Glime
Steve Goettel
Kathy Good
Steve & Lynn Goode
Kay & Harlan Graber
Jim & Val Gray
Jason Grimm
Bev Grindeman-Adams &
Dan Adams
Bill & Nancy Grindle
Rebecca Groff
Kris & Deborah Gulick
Marc & Cathy Gullickson
Harlo Hadow & Joy
Stoker-Hadow
John & Margaret Hall
Janet Hall
Don & Irene Hamous

Richard & Ruth Hanley
Dave & Bev Hannon
Albert Hanson
Tom & Sharon Hanson
Kimm Harris
Mark & Deb Hartung
Kate Hawkins
Stephanie Hawthorne
Mary Hay
Betty Heidt
Mary Beth Helgens
Terry Heller
Joan & Al Hellmann
Mildred Hemesath
Rhonda Henderson
Francis & Barbette
Henderson
John Hendricksmeier
Susan Heng
Holly Hermann
Dorothy Hershner
Steve & Marta Hershner
Tom Hess & Nancy York
Daniel & Tina Hess
Steve & Cyndy Hilby
Tim & Katie Hill
The Jared & Carol Hills
Foundation
D.J. & Janet Hinker
Dot Hinman
Keith & Helen Hixson
Darlene Hocken
James Hodges
Jim & Ann Hoffman
Brett Hollenbach
Gary & Joan Holst
Wayne & Gay Holstine
William & Jeannette Holtz
H. D. & Myrene Hoover
James & Mavee Hoover
Barb & Don Horak
Marvin Houg
Melinda Howerton
Tony & Suzanne Huebsch
Sarah Huey
Barbara Hughes
Tom & Megan Hughes
Kim & Cheryl Irvin
Alicia Dee Jackson
Margaret Jackson
Melanie Jacobowitz
Jill Jamieson
Jon & Jodie Janda
Donna Janes
Ryan & Sheri Jeffery
Kim & David Jennings
Joann Jennings
Glenn & Marjorie Jensen
Kay Johansen & David
Osterberg
Beth & Preston Johnson
G. Richard & Jackie
Johnson
David & Laura Johnson
Forest Johnson
Jill Jones
Bob Jones & Kate Van
DeWalle
Nate & Samantha Kaeding
Leighton Kaloupek
Janelle Karau
Robin & Judy Kash
Pam Kaufman
Kory Kazimour
Marilynn Keller
Larry Kennedy
Mary Ellen Kenney
Ed & Leslie Kesser
Alan & Karen Kessler
Bill & Kathy Kilbourn
Kenneth Kirby
Flora Kitzman
Jim Klauser
Denise Klemp
Harold & Beverley Klink
Dorothy Klinkhammer
Jerry & Sherry Kneeland

Dave & Ethel Knutson
Robert & Joan Kocher
Kelle Kolkmeier & Dan
Sauerbrei
Renee & Dean Konrad
Melanie & Jeff Koolbeck
Mary Kopecky & Thom
Lusardi
Tom & Sherrie Kopecky
Stephen Kossayan
Nancy Kraft
Elaine Kresse
Stephanie Kriskchuk
Vickie Kriz
Dale & Marlys Krohse
Paul Lakeman
Marilyn & Gary Langhurst
Sue Latham
Nelson & Mary Lou Lazear
Lindsay Leahy
Lauri Lehn
Mark Leifker
Bernie & Deanna
Lettington
Leo & Zinnia Lim
Barbara & John Lindholm
Barbara Lob
Kathy Loux
Wayne & Noma Lucas
Brandy Lundy
Kara Lympos
Eric Lynch
Lisbeth Maas
Dixie Mackie
Pamela & Brian Mackinson
Melody Malek
Ann & Wayne Mallie
Monte & Mollie Marti
Jim & Traci Maxted
Helga Mayhew
Cae McCalley
George & Janelle McClain
Kate McClain
Caroline McCool
Dave & Janice McInally
Thomas & Sandra McIntosh
Mark & Ann McKinstry
Sandy McVey
Mickey Meaney
Kristin Mears
Russell & Janet Melby
Brenda & Mike Meshak
Ayrton Messerschmitt
Roger & Linda Mildenstein
Nancy & Rick Miller
Mary Miskimen
Kathleen Mitchell
Frank & Cheryle Mitvalsky
David Mohre
Bob & Sue Mollman
Jim & Rose Marie Monagan
Nancy Moore
Bob & Tara Moorman
Tom Moran
Bob & Susie Moran
Alexandria Morgan
Gayle Morgan
Tyson Morio
Sue Moss
Clint & Gale Mote
Tom & Melinda Moye
Chris & Brandi Mueller
David & Barbara Murray
John & Meredith Myers
Mike & Coleen Myers
Ron & Margaret Nelson
Marilyn Nelson
Pat & Jim Nemmers
Bruce & Jane Nesmith
Janet Neumann
Julie Newgard
Melonee & David Nichols
Jeffrey & Anita Nicholson
Rory & Karon Niebuhr
David Nordmann
John & Christine North
Bill & Vicki Oakley

Rentals at Indian Creek Nature Center

Are you looking for a beautiful setting for your company's next meeting or event? Look no further than Indian Creek Nature Center. Whether you're hosting a holiday party for 200 people or a focus group for 12, we can accommodate your needs. Our Amazing Space building opened in 2016 and features the below spaces, all available for rent. The best part? Each rental supports the mission of the Nature Center.

Contact us today!

To book your rental, contact Rachel Bailey at (319) 362-0664 or rachel@indiancreeknaturecenter.org. View photos, rates and more on our website: indiancreeknaturecenter.org/rentals

Bill & Esther O'Donnell
Olberg Family Charitable
Trust Inc
Chris, Sally & Anna Olsen
Scott & Penny Olson
Ron & Sue Olson
Peggy Orcutt
Steve & Lora Overbeck
Steve Oyen
Thomas & Joan Padley
Jim & Trish Palmer
Don & Linda Palmer
Abby & Mike Panoske
Diane Pansegrau
Larry & Janelle Parks
Reed Passafaro
Diana Rae Patten
Jo Pearson
Ken & Shirley Peckosh
Charlotte Pence
Michael Pesch
Jim & Laure Peters Family
Don Petersen
Prudence Petersen
Burgess & Joan Petersen
Joanne Peterson
Shirley Pfeifer
Fred & Janet Manatt Pilcher
Bonnie Pisarik & Joyce
Steffen
Priscilla Polehna
Ed & Sylvia Popelka
Morris Pounds
Jim & Patty Powers
Jim Preslicka
Carol Preston
Pinky & Flo Primrose
Casey Prince
Jim Probst
Virginia Pugh
Nancy & Tom Pugh
Silvia Quezada
Dave & Dawn Radack
David & Holly Rasmussen
David & Mary Jo Rater
Richard & Patricia Rathjens
Howard & Diane Rattner
Sandra Reckert-Reusing
Denny & Jan Redmond
Stephen Reed
Susan & Larry Reeve
Kathy Regennitter
Karen & Robert Reitz
Pam & Randy Reynolds
Richard & Sarah
Rheinschmidt
Okpara & Julie Rice
Rebecca Riedesel
Rich & Kay Riehl
Nan Riley
Peter & Joan Riley
Scott Friauf
Cheri Rizer
Todd & Jennifer Roberts
Elyse & Noah Robinson
Glen & Mary Rocca
Rae & Dan Rochester

Jennifer Roeder
Jim & Jean Rogers
Karen Rogers
Betty & John Rogers
Dean & Debra Roggow
John & Karen Roltgen
Eleanor Roquet
Carolyn Rosberg
David & Cheryl Ross
Megan & Mike Ross
Meghan Rossbach
Lisa & Brian Rosteck
Dave & Kris Rowley
Ann & Henry Royer
John & June Sackett
Sandra Scaia
Jane Scheer & Rob Hursh
Rich & Donna Scheer
William Scheible
Howard & Sheri Schiffer
Jane Schildroth & Peter
Jaynes
Dennis & Linda Schlicht
John & Carolyn Schmidt
Amy Schmidt
Starla Schneider
Bill Schoon
Alex & Elizabeth Schott
Douglas & Joan Schrum
Nancy Schuman
Pat Sealy
Deborah Sedlacek
David Seery
Richard Sentman
Ivy Seufferlein, Savanna
Snead, David Seufferlein
Mary Seyfer
Jim & Michelle Shaw
Noralee Sherwood
Jacob Shuldiner
Elaine & Bruce Shuman
Lynn & Pete Sidwell
Marilyn Sippy
Richard & Jan Smethurst
Jen & Jason Smith
Les Smith
Alice T. Smith
John Smith
Claire Smith
Joanne Smith
Peter & Ida Martin
Sorensen
Donna Spellman
James & Nancy Spencer
Marty St Clair & Cindy
Strong
Tom & Mary Stanford
Rod & Susie Stark
Erin Steffen
Mark Steinhardt
Gary & Judy Stevens
Theresa & Jerry Stevens
Betty Stewart
Marilyn Stoecker
Dale & Nancy Stout
Julie Stow
Steve & Deborah Streff

Sallie Streib
Carolyn Stucker
Melissa Summers
Keith & Nancy Sutherland
Barb Szucs
Byron & Julie Tabor
Anne Taylor
Karen Taylor
Ken & Cathy Terukina
Patti Thacker
Lisa Ross & John Thedens
Jill Thies
Greg & Lisa Thirnbeck
Nancy Thompson
Philip & Cherie Thompson
Dale & Joy Thompson
Lynn Tiemann
Mary Tilton
Marie Timko
Karen Tong
Matteo Tormene & family
Ted & Cathy Townsend
David & Pat Treneman
Phoebe Trepp
Judy & Jim Tucker
Tim Van Deest
Gretchen Van Heukelom
Linda Van Nieuwaal
Carol Vinton
Jake & Tonya, Henry &
Remy Vitense
Mike & Jan Vlasak
Christine & Susan
Wagner-Hecht
Gloria Walko
Philip & Joanne Ward
Nancy Warren
Stanley & Marilue Watkins
Sarah Watson
Julie & Campbell Watts
John & Lynn Weber
Duane Weber
Tom & Susan Wehmeyer
Lynette Welch & Dennis
Oberreuter
Kathryn Wells
Keith & Barb Westercamp
Keith Whipple
Brian & Kristin White
Phil & Laura White
Marcia Whiteford
Marty & Diane Wiesenfeld
Kristen & Kyle Wilcox
Paul & Gayle Wilcox
Lois Willhoite
Jim & Barbara Wing
Neoma & Mike Winn
Kay Winter
Ashley Wittman
Lois Wood
Jasmine & Mickey Wu
Barbara Yerke
Eugene & Caroline Young
Daniel & Rebecca Zange
Judy Zier
Carol & Brian Zumhof

Gifts In-kind

Craig & Debbie Aldrich
Kathleen & Tom Aller
Richard & Candy Altorfer
Elaine Ball
Dale Bappe
Vonda Birchmier
Dave & Becky Bowman
Mary Anne Brindley
George & Anne Busha
Mary & Jeff Christensen
Molly Cook
Greg & Wendy Dunn
Joanne Eastin
Doug and Mary Jo Elam
George Etzel
Al & Ellen Fisher
Mark & Joyce Fleming
Paul Gardner
Lynn & Jim Goeke
Kathy Hall
Kate Hawkins
Frank & Marge Helsell
Vicki Hughes
Shelby Humbles
Jill Jones
Ed King
Nancy Klopp
Mary Kopecky
Barbara Logan
Barbara Louvar
Barb May
Christine McCarthy
Quin & Ana McClain
Grace Meyer
Diane Mork
John & Marcia Myers
Hannah Neuville
Norma Newmeister
Bill & Esther O'Donnell
Susan & Abraham Oglanian
Rick Parizek
Bob Pearson
Barb Perkinson
Marta Petermann
Sharon Poplowski
Dolores Rawson
Berta & Ade Ringold
Victor Root
Arlen & Cheryl Russell
Cindi Schamberger
Virginia Scheffer
Jane Schildroth
John Schwartzkopf
Kathy Severson
Marilyn Sippy
Rod & Susie Stark
Terry & Marlyse Strait
Jill Thies
Kate West
Phil & Laura White
Kathleen Ziegler

Business and Organization Donors

\$5,000 and up

Alliant Energy Foundation
City of Cedar Rapids—
Hotel-Motel Tax Fund
Grant
Rockwell Collins

\$1,000-\$4,999

AARP Iowa
Acumen
Alliant Energy
Bankers Trust Co
Central Iowa Power
Cooperative
Dakota Red Corporation
Forman Ford

Hawkeye Hoo Hoo Club
Highway Equipment
Company
Hills Bank & Trust Company
ITC Midwest
Plumbers & Steamfitters
Local 125
Schneider Electric
Toyota Financial Services
UNFI

\$250-\$999

Bank of America Charitable
Foundation
Braun Intertec Corporation
CliftonLarsonAllen LLP
Corridor Running Inc
Dave Schmitt Construction
Co
Evergreen Packaging
Equipment
Good Earth Garden Club
Hawkeye Area Labor
Council AFL/CIO
Linn County Rose Society
Marion Process Solutions
Morgan Stanley
Rockwell Collins Matching
Gift Program
Sage Practices LLC
Schimberg Company
Strategic Print Solutions, Inc.
TechniCom Inc
Thursday Noon Optimist
Club of Cedar Rapids

Up to \$249

Americlean
CSB Select 50 Plus
GO Cedar Rapids
Kiwanis Club Marion
Sunrises
PEO Chapter HJ
PEO Chapter IH
Rotary Club of Cedar
Rapids
Ryan Companies US Inc
Schneider Electric North
America Foundation
Seidl & Seidl, PLC
SofterWare
SystemWorks LLC
Wapsi Ana Garden Club
Westminster Presbyterian
Church

Gifts In-kind

1st Avenue Wine House
Allegra Print and Imaging
Alliant Energy
Alpaca Fiber Arts LLC
Amerigas
Baby Time
Bloomsbury Farm
Brewhemia
Carpenters Local Union #308
Chestnut Mountain Resort
DCL Consultants LLC
Earl May Nursery & Garden
Center
Eden's Bee Butter
Fron Design Studios
Gourds by DJ
Harvest Sewn
Hawkeye Fire & Safety
Hughes Nursery &
Landscaping
Hy-Vee Food Store #7
Illuminations
Jeanne's Brooms & Baskets
John F. Kennedy High
School
Joy Cone Company
Koppenhaver & Associates,
PC
LattaHarris LLP

Light of the Heartland
Lion Bridge Brewing
Loom N Essence
M. A. Cook Design
MCG BioComposites
Mediaquest Companies
Mercy Medical Center
Metamorphosis Pilates
Center
Monarch Watch
Natural Grocers
Nelson's Meat Market
New Bo Mercantile &
Vintage Shop
New Pioneer Food Co-op
Next Page Books
Plant Me a Garden
Raygun
Reinhart Food Service
Rockwell Collins
Schumacher Custom Tile
Spa at Salon Studios 114
Special Effects
Strategic Print Solutions, Inc.
Sundown Mountain
The Sanctuary Spa
Theisen's
Therapeutic Collective
Village Table
Winter Wildlands Alliance
Wood, Brass & Glass
Young at Harp

In Memoriam /In Honor

ICNC received donations in honor or in memory of the following individuals in 2017.

In Honor Of:

Bob & Beth Allsop
Janet Budack, Kay Graber,
Sharon Hill & Gretchen
Sutherland
Yara & Joe Conway Family
Sheila Hahn
Lisa Henderson
Katie Hill
Dennis McMenimen
Pete & Alice Pertile

In Memory Of:

Maurice Albrecht
Elaine Ball
Carrie Bena
Theresa Beusch
Janet Block
Mike Bowen
Elizabeth Bucksbaum
Paul Christiansen
Paul Clark
Herb Eckert
Joy Fisher
Jeanette Hamer
Cliff Haverkamp
Virgil Heidt
Kathleen Hendricksmeier
Gene Hinman
Susan Houg
Lillian McGraw
Ramona Nelson
Jeff Newman
Don Owen
Shirley Reynolds
Jean Ross
Linda Scarth
Elmer Scheetz
Stephen Stanford
Derek Thornton
Bobby White

2017 Event Sponsors

Concerts at the Creek



Maple Syrup Festival



Creek Camp



Farm to Table dinners



Preschool program



Nature's Noel



Backcountry Film Festival



Monarch Fest



Honey Fest



Living Landscapes Conference



International Owl Center program



Thank you,
Amazing Space
donors!

ICNC would like to thank all individuals and businesses that contributed to the Amazing Space capital campaign, allowing us to exceed our goal and raise over \$7 million to complete our building and campus. These donors were listed in the 2016 annual report, and while some continue to make payments on pledges through 2020, we have not listed those donors again in this report. If you would like a copy of the 2016 annual report, please call us at (319) 362-0664.



2017 Endowment Funds

In late 2017, certain endowed funds created at the Greater Cedar Rapids Community Foundation to benefit Indian Creek Nature Center were consolidated into mission-focused funds. We continue to honor the memory and service of those who provided or inspired legacy gifts to benefit the Nature Center for generations to come.

Indian Creek Nature Center General Operations Fund

Legacy Donors:

ICNC Founders, BB Stamatis & the Jean O'Donnell Family (Michael & Tiffany O'Donnell, Ann O'Donnell Ilten)

2017 Donors to this fund:

Kathleen & Tom Aller
Teresa & Greg Barnett
Tony & Marcia Bedard
Dan & Janet Engle
Jerry & Sherry Kneeland

Patricia Meier
Jeff Portman
Lisa & Randy Ramlo
John L. Thompson
Charitable Trust
Justin Voss
Jen & Shannon Welton

Indian Creek Nature Center Education Fund

Legacy Donors:

Metro High School
Mrs. Paul (Sigrund) Lynch
Richard Schulz (in memoriam)
Robert G. Worley

Indian Creek Nature Center General Operations Friends Fund

Legacy Donors:

Jeanne and Robert Blahnik (in memoriam)
Cedar Rapids Garden Club
Harriet and Robert Eckard

2017 Donors to this fund:

Kathleen & Tom Aller
Scott & Sheryl Arensdorf
Teresa & Greg Barnett
Tony & Marcia Bedard
Neil & Renate Bernstein
Ryan & Katie Buresh
Bill Davis & Kathryn Franzenburg
Dan & Janet Engle
Les & Katrina Garner
Jerry & Sherry Kneeland
Patricia Meier
Sue & Ron Neil
Scott & Penny Olson
Steve & Susan Ovel
Jeff Portman
Lisa & Randy Ramlo
Sara & Jim Sauter
Justin Voss
Jen & Shannon Welton
Judith Whetstine & Bob Rush

Indian Creek Nature Center Education Friends Fund

Legacy Donors:

Ella Johnson Miller
Helen Troxel (in memoriam)
2017 Donors to this fund:
John & Laura Locher

Indian Creek Nature Center Land & Facilities Friends Fund

Legacy Donors:

Carl and Doris McClain
Lynne Stimpel Family (in memoriam)

2017 Donors to his fund:

Rich & Marion Patterson

In addition, Indian Creek Nature Center is grateful for grants and endowment distributions received from these funds at the Greater Cedar Rapids Community Foundation in 2017, with donors to those funds shown below the fund name:

Alex Strait Memorial Fund for Indian Creek Nature Center
Dick & Mary Meisterling
John & Meredith Myers

Altorfer Inc Non-Endowed Donor-Advised Fund
Betty & Meril Geuder Land Care Fund
Bloomhall Family Fund
CRST International Fund
David & Chris Kubicek Endowed Fund
Dean & Laura Gesme Family Fund
Diamond V Corporate Fund
Dorothea & Joseph Hall Gift of Wonder Fund
Dorothea E. Garberson Wildflower Project Fund
Endowment Challenge Matching Grant Fund
Etel Sugar Grove Farm Endowed Fund
Frontier Natural Products Co-op Quasi Endowed Fund 1
Gerald T. & Karen J. Knot Fund
Gladys Bock Children's Fund for the Indian Creek Nature Center
GreatAmerica Financial Services Corporation DA Fund
Jay G. Sigmund Fund
Kolln Family Endowed DA Fund
Linn County Fund
Norm & Floy Erickson Endowed Fund
Paul Christiansen Memorial Fund

Liz & Dana Christiansen
Robert W. & Elizabeth M. Allsop Fund
Roger & Thea Leslie Endowed Fund IV
Ruth M. & Clifford M. Altermatt Fund
Sarah Halbrook Family Fund
Steven & Joanne Carfrae Fund
Van Meter Donor Advised Fund
William B. Quarton Fund

In 2017 these new endowed funds were established at the Greater Cedar Rapids Community Foundation, with 2017 donors shown below the fund name:

Dr. Eugene & Carleen Grandon Indian Creek Nature Center Endowment Fund
Joy Kim Fisher Memorial Fund
Campbell Steele Gallery AI & Ellen Fisher Patterson Family Endowed Fund
Paul & Jennifer Morf Endowed Fund for Indian Creek Nature Center

Volunteer Kathy Severson Leads Friends of the Nature Center



Kathy Severson was an elementary school teacher for 35 years—but none of her hundreds of hours of annual volunteer time at Indian Creek Nature Center include leading field trips. “I love working in the gift shop and seeing the field trip go by, and not being a part of it,” she says with a laugh.

While Kathy’s years of working directly with children have passed, her primary role leading the Friends of the Nature Center group allows her to make an impact on environmental education at ICNC—something she cares deeply about, and traces back to her years in teaching. “The purpose of the Friends group, to provide educational opportunities for all ages at the Nature Center, is so important to me.”

Friends of the Nature Center, known to many by its previous name, the Nature Center Guild, raised more than \$27,000 in 2017 that directly supports environmental education at ICNC. Volunteers of the Friends group plan, organize, and execute two major fundraising events each year—the Spring Plant & Art Sale, and Nature’s Noel. In 2016 and 2017, they also hosted the Soup’s On Soup Supper.

“Shirley Benfer brought me in my first year [to Nature’s Noel], when I retired. I helped with food prep, which is not my thing at all. Shirley said to me, ‘make a roux’—and I didn’t know how to do it. So I peeled potatoes instead. She still gives me a hard time about that,” Kathy remembers.

Now, not only does Kathy love helping to create wreaths and tree toppers from fresh greens that Nature’s Noel is famous for, but she coordinates group meetings, and plans all the steps needed to pull the event off. “I don’t know what you’d call me. They say president; I don’t like president. I like ‘facilitator.’ I coordinate the others who are in charge of all the individual parts.” Kathy is quick to talk fondly of the Friends group’s many devoted volunteers.

While the leadership Kathy provides to the Friends group is invaluable, her favorite part is the camaraderie of the people, and seeing all the hard work come together. “I love the actual day of the event. Seeing all the people come, shop, buy the things we’ve made. That big line on the day of the event—that’s really wonderful.”



Kathy Severson

Interested in joining Friends of the Nature Center? Just fill out the volunteer application at indiancreeknaturecenter.org/get-involved/volunteer, or call us at (319) 362-0664.

Thank you, volunteers!

The following individuals were recognized at our 2017 Volunteer Recognition Dinner for their incredible contributions of time and talent to Indian Creek Nature Center:

Jack in the Pulpit award: Pat Meier and Terry Strait

Founders award: Jan Aiels, Roger Heidt, Marlys Harriott

Education Volunteer of the Year: Tom Cleveland

Land Volunteer of the Year: Phil White

Outstanding Service by Community Supporter:
Alliant Energy, Carpenters Local 308

Commitment to Excellence Award: Tom Hughes



indiancreeknaturecenter.org
NatureCenter@indiancreeknaturecenter.org
5300 Otis Rd SE, Cedar Rapids, IA 52403
(319) 362-0664